

# BESPOKE SOLUTIONS



## Bespoke solutions from ADDI-DATA

### SERVICES FOR SPECIAL DEMANDS

In measurement, control and automation applications, standard components are normally used. But there are some requirements which cannot be satisfied with standard components.

The question for you is whether product adaptations or new developments can be dealt with in-house. Time pressure or resource planning must be factored into this process.

If in-house implementation is impossible, you will need a reliable partner who can offer you the precise solution as part of his service. Just ask us! We will be glad to help you, from the most minor adaptation to new product development.

#### Technical experts

From the very beginning, ADDI-DATA has been developing high-quality solutions for PC-based or distributed applications. 25 years of experience and expertise speak for themselves.

#### With professional project management

We carry out adaptations to project templates or individual developments in a focused and efficient way – and of course comply strictly with the DIN EN ISO 9001:2008 standard. That applies not only to the internal processes of ADDI-DATA, but also to the project implementation with you.

#### For a bespoke solution

Individual requirements demand unique solutions. We offer a wide range of services – from adapting a standard product to developing a completely new one.

#### With the right partner

We will support you in your project right from the start.

Try us out!

On page 17, you can find a checklist in which you can describe the requirements of your application.

Send us this checklist by fax.

We will advise you for free!

**Together we will find the right solution!**

## YOUR BENEFITS

- Innovative solutions
- Professional project management
- Support right from the start
- Security of investment through long-term availability

## What can we do for you?

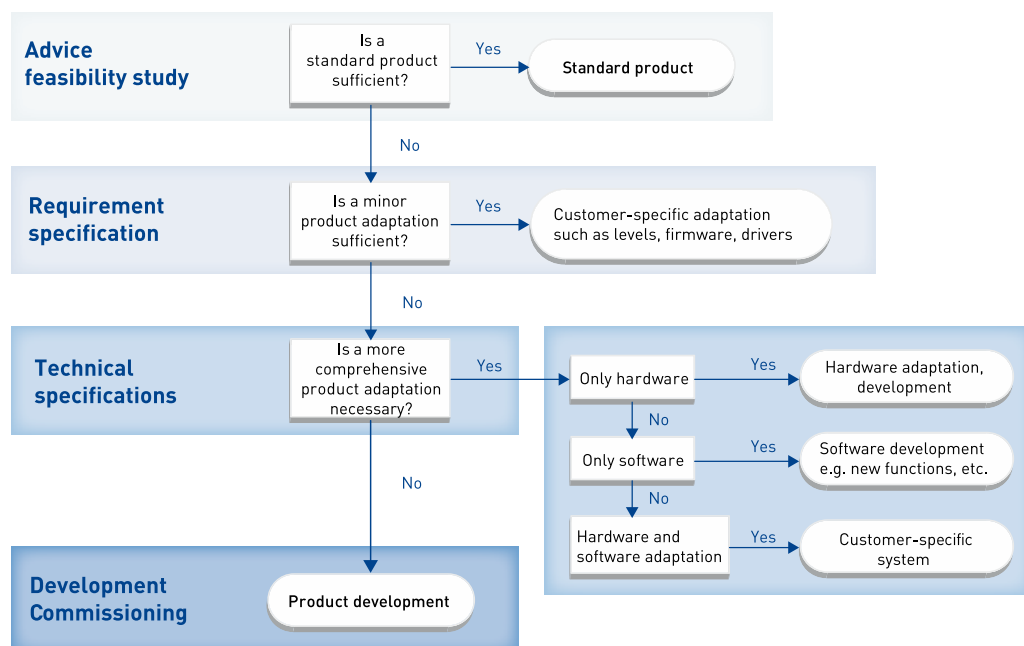
The efficiency of your application depends on how well the components work. If standard components do not lead to the objective, we provide further assistance with our knowledge and experience and offer you a bespoke solution.

- Minor adaptation of standard products:  
Specific signal type such as 12 V instead of 24 V, additions to the firmware, driver adaptation, etc.
- More complex adaptation of standard products:  
Both hardware and software changes can be taken into account.
- Product development:  
If standard products cannot be adapted, we will develop the appropriate solution for you.

Your individual solution in 5 steps!

From making the first contact through to commissioning, there are only 5 steps which we will explain to you in more detail on the next page.

From standard products to complete product development: We'll find the right solution for you!



## Professional project management



### EASY STEPS

Product adaptation or a new development is so easy with ADDI-DATA:

#### Step 1: Your enquiry

Contact us by phone, fax, e-mail or by using our contact form at [www.addi-data.com](http://www.addi-data.com) and describe your project to us. We will also be happy to visit your company to discuss your project.

#### Step 2: Technical/commercial feasibility study

An ADDI-DATA expert team will be set up to analyse your enquiry.

#### Step 3: Creation of requirements specification

We create a requirements specification which complies with the DIN EN ISO 9001:2008 standard and define the time schedule for development.

#### Step 4: Development

We develop your solution according to the approved technical specification.

#### Step 5: Commissioning

Development is complete, extensive tests have been carried out on site. Now we support you in commissioning – if desired, also on the spot, worldwide – and pass on our expertise to you.

Would you like advice? Then fill in our checklist on page 17. You are also welcome to e-mail us at [info@addi-data.com](mailto:info@addi-data.com), or to phone us at Tel: +49 (0)7229 1847-0.

**We'll get back to you!**

### Examples



Adaptation of existing hardware: Specific signal type such as 12 V instead of 24 V, modification of the low pass filter, etc.



Adaptation of software: Drivers for specific operating systems, adaptation of samples for integration into an existing application, etc.



Firmware enhancement of existing hardware: Digital filter, calculation of average values, data processing, etc



Complete product development: Interference-free PC boards, distributed solutions, complete systems, etc.

